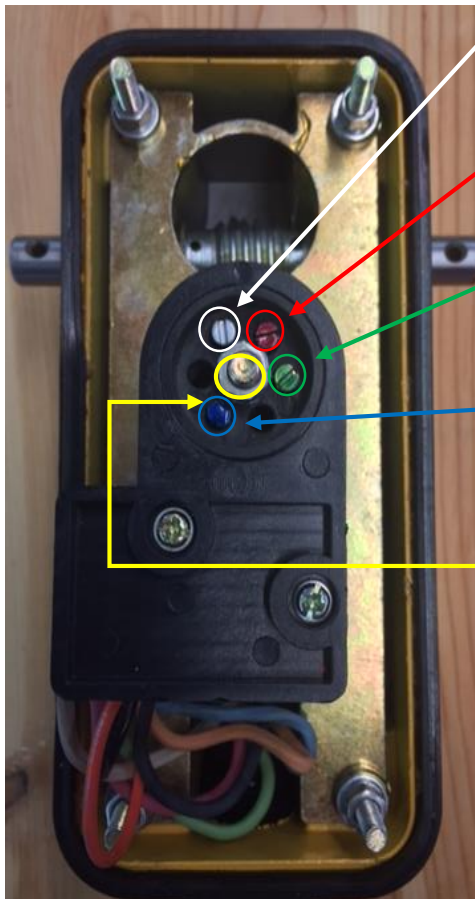


How to Connect 1 or 2 Interlocks on a 2 Stop Limit Switch

FAILURE to follow these directions voids all warranties to equipment as written or implied. Galaxy Unlimited LLC will assume NO responsibility to damages that were a result of improper installation or user error. The Galaxy 2 stop limit switch is capable (if requested) of controlling 2 Interlocks. **CAUTION:** There is high voltage (120VAC) when connecting an Interlock inside the limit switch.



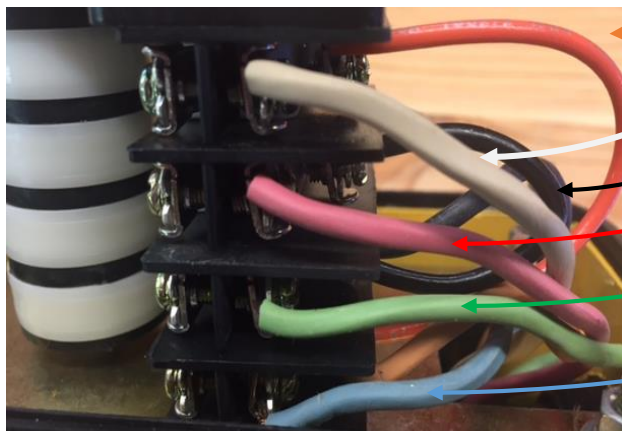
White is used for the top floor Interlock adjustment

Red is your top level stop. (Basket top destination)

Green is your bottom level stop. (Basket bottom destination)

Blue is used for the bottom floor Interlock adjustment

Retainer Screw must be tighten after adjustments are made



Galaxy 2 Stop Limit Switch with Interlocks. Color code as follows:

Orange = Earth Ground

White = Top Interlock (120 vac)

Black = Common for limits (not earth ground)

Red = Top Limit (Basket top destination)

Green = Bottom Limit (Basket bottom destination)

Blue = Bottom Interlock (120 vac)

How to Connect Interlocks

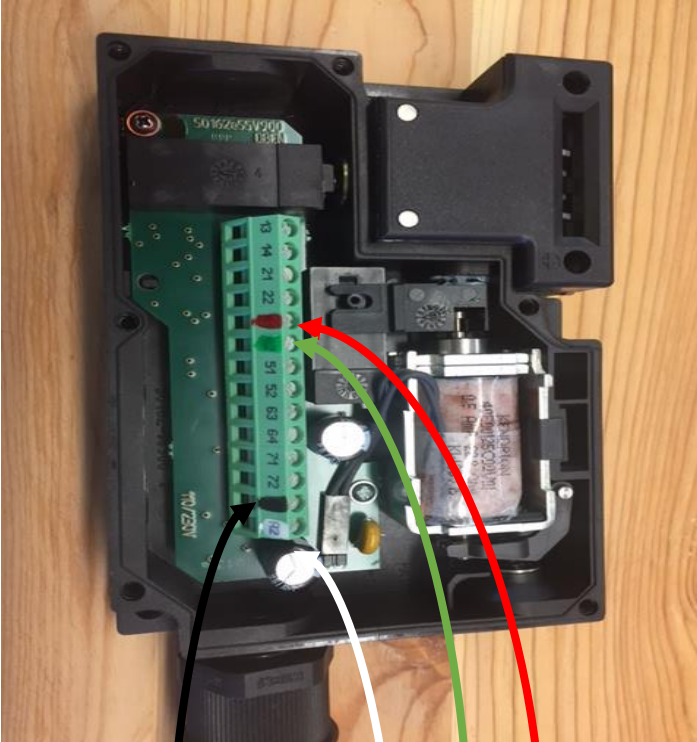
-INTERLOCKS ARE WIRED THE SAME-

White = from Limit Switch Blue or White

Black = 120 VAC from L1 on contactor

Green = 24 VAC from transformer

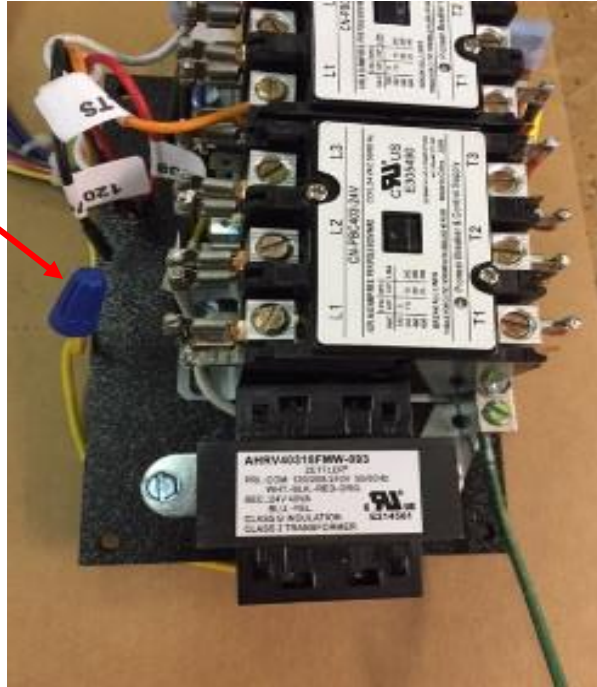
Red = 24 VAC from transformer



How to Connect Interlock(s) to Control Box

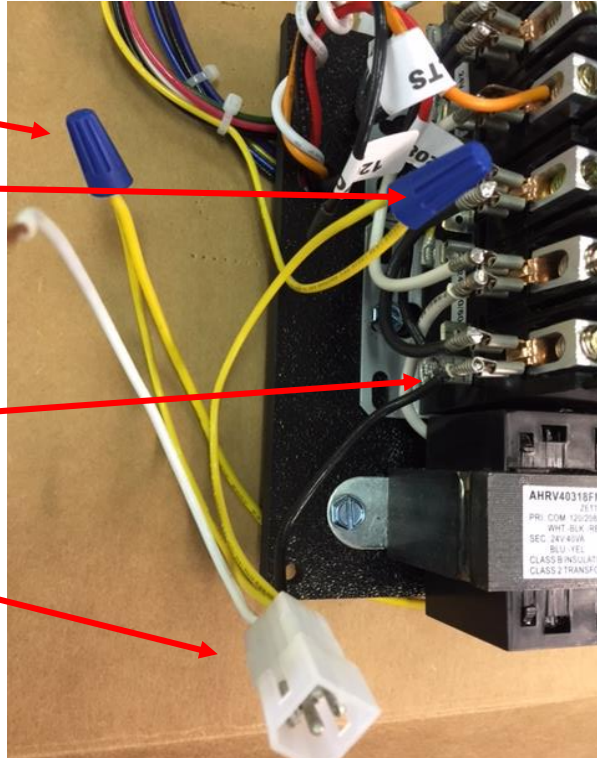
STEP 1-

Inside of control box. Look for blue wire nut connecting 2 Yellows, or Yellow and Green from transformer. This will be on the left side of control box. Remove wire nut and pull apart wires.



STEP 2 –

Connect the Interlock harness Yellows to each Yellow or Yellow and Green in control box

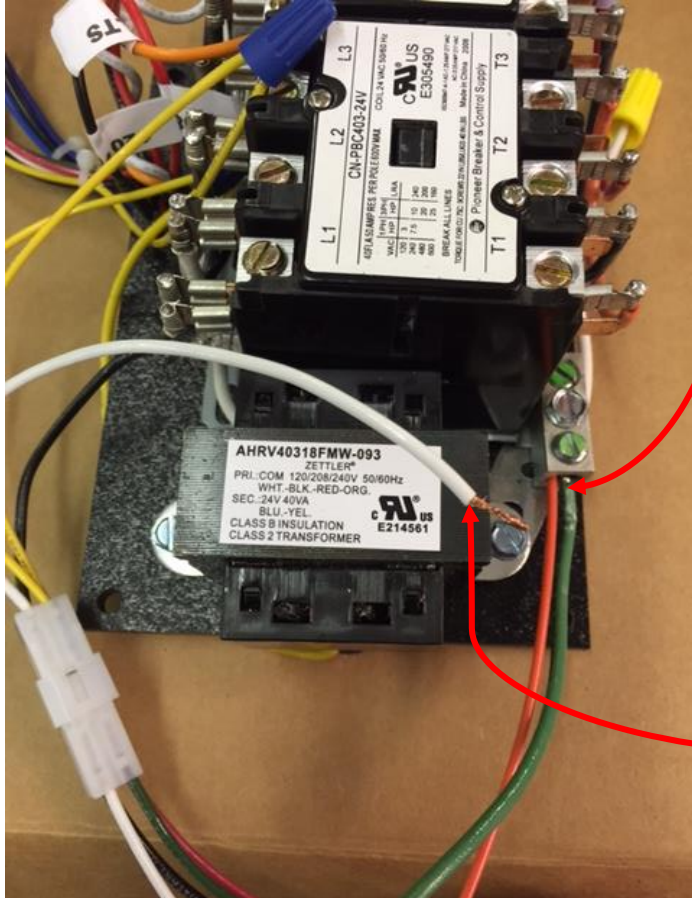


STEP 3 –

Connect the Black from Interlock harness to L1 on contactor

Interlock Harness

How to Connect Interlock(s) to Control Box



STEP 4 –

From the 2 Stop Limit Switch, the Orange wire will connect to earth ground.

STEP 5 –

From the 2 Stop Limit Switch, the Blue wire (bottom Interlock) will connect to the White from Interlock harness. Note: If you are only connecting 1 Interlock you can choose top or bottom by choosing the wire from Limit Switch; Blue for bottom or White for top. **Caution:** When power is turned on there will be 120 VAC at the Limit Switch on these wires.